



## PRODUCT USE GUIDE

QUICK  
INSTALLATION  
GUIDE

# MH01

## HEADSET & MOUSE GAMING COMBO

### TECH SPECS

Headset Specs:

Sound: stereo  
Frequency response: 20 Hz ~ 20 KHz  
Speaker size: 50 mm  
Speaker impedance: 32Ω± 15%  
Speaker sensitivity: 120 dB ± 3 dB  
Microphone type: omnidirectional  
Microphone sensitivity: -38 dB ± 3 dB  
Microphone size: 4x1.5 mm  
Backlight: Rainbow  
Connectors: 2x 3.5 mm jack,  
USB (for LED light)  
Cable length: 2.0 m

Mouse Specs:

Sensor: Optical  
DPI: 800-1600-2400-3200-  
4800-6400 (default)  
Buttons: 6 (programmable)  
Switch rating: 3 million clicks  
Interface: USB 2.0  
Cable length: 1.5 m  
Weight: 76 grams  
Size: 125 x 64 x 40 mm

QUICK  
INSTALLATION  
GUIDE

### PRODUCT PRESENTATION

#### 1. FEATURES

Headset features:

- Closed, over-ear design for powerful bass sounds
- Soft-cushioned leather ear cups
- Built-in volume controller

Mouse features:

- Ultra-lightweight, as low as 76 grams, thanks to special perforated-honeycomb chassis design.
- RGB backlight with multiple selectable lighting schemes
- Advanced customization software

#### 2. SYSTEM REQUIREMENTS

PC system or compatible with the installed sound card,  
two USB ports available; Windows 7 or newer operating  
system.



50 MM  
DRIVER SIZE



DPI STEPS  
800/1600/2400/3200/4800/6400



DRIVER  
PROGRAMMABLE



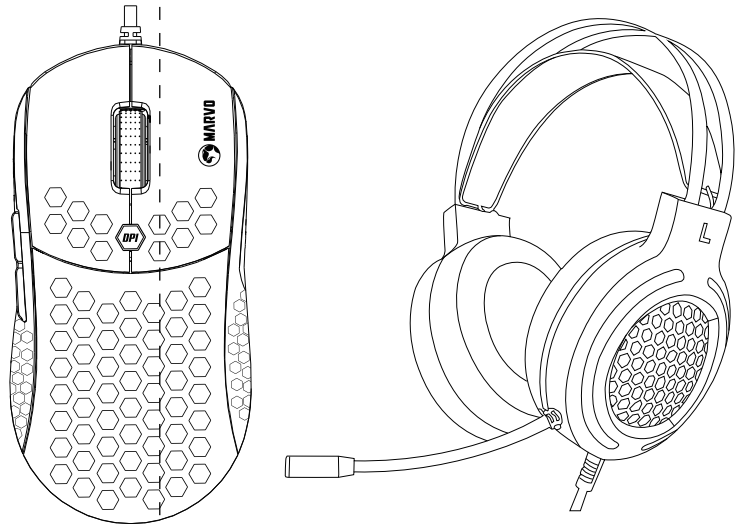
VOLUME  
CONTROL



6400 DPI  
OPTICAL / LASER SENSOR



ERGO  
DESIGN



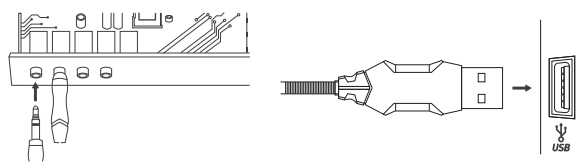
QUICK  
INSTALLATION  
GUIDE

### SAFETY NOTES

- To prevent possible hearing problems, do not use the headphones at high volume for long periods of time.
- Keep the equipment dry. Keep away from precipitation, humidity, all types of liquids and condensation.
- Do not use the product with wet hands.
- Do not use or store the equipment in dusty or dirty areas.
- Do not store the equipment under high-temperature or low-temperature conditions (this may damage it).
- Do not drop, knock or shake the equipment (use may result in breakage).

### INSTALLATION

Each headphone audio jack is colored different (green for headphones, pink for microphone) or has an icon on it. Connect each jack to the matching input on the sound card. Insert the USB connector into a USB port on your computer.



Connect the mouse to the available USB port on your computer and wait approx. 15 seconds until the generic driver is installed.

QUICK  
INSTALLATION  
GUIDE

### USE

Headset:

Use the knob on the headset to control the volume.

Mouse:

Press the buttons below the scroll wheel to change the sensitivity according to predefined DPI steps.

For advanced mouse configuration, please download and install the specialized driver at [www.marvo-tech.hk](http://www.marvo-tech.hk) (an Internet connection is required):

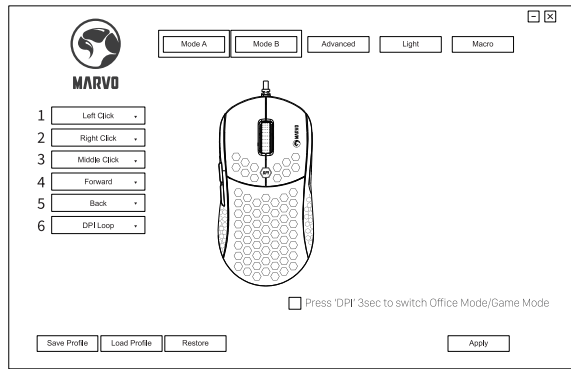
- download the driver and double-click the executable file;
- follow the on-screen instructions and install the application;
- after installing the application successfully, an icon will be displayed in the taskbar;
- double-click this icon to launch the application.

QUICK  
INSTALLATION  
GUIDE

### MOUSE DRIVER USE

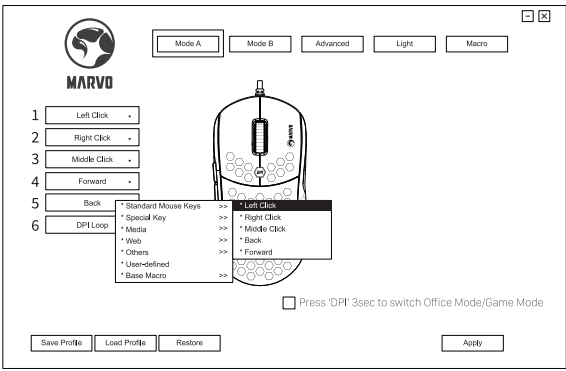
Key Setting

Select "Mode A" or "Mode B" tab and set user-defined function of each key as following graph. 1 for Left Click, 2 for Right Click, 3 for Mid click, 4 for forward, 5 for backward, 6 for DPI Loop is kept as default.



QUICK  
INSTALLATION  
GUIDE

One click the key you want to set then chose a new functions.  
Click "Apply" to save the setting.

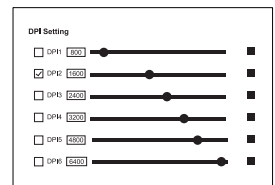
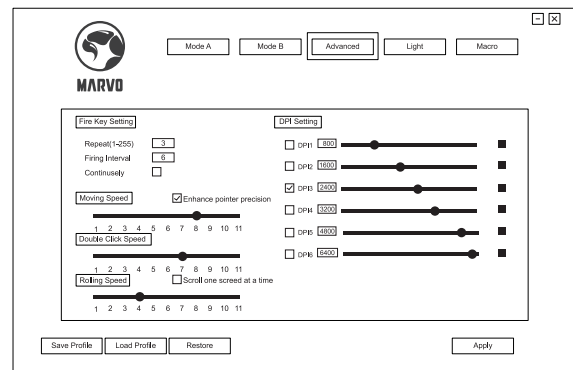


### Advanced Setting

Select "Advanced" tab and set Fire key Setting/Moving Speed/Double click second/Rolling speed/DPI setting functions as following graph.  
Click "Apply" to save the setting.

[www.marvo-tech.com](http://www.marvo-tech.com)

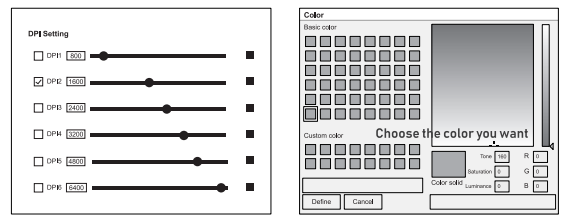
QUICK  
INSTALLATION  
GUIDE



#### User define color

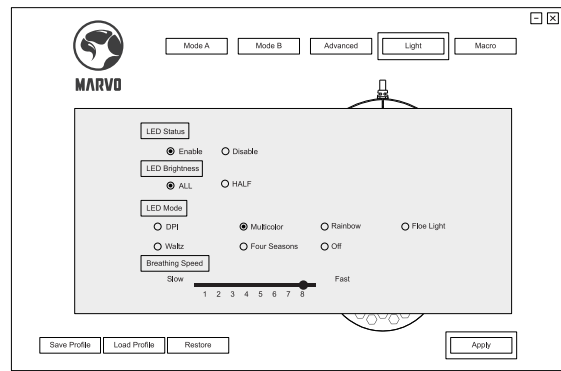
Double click the color label, choose the color you want.  
Click "Apply" to save the setting.

QUICK  
INSTALLATION  
GUIDE



#### Light Setting

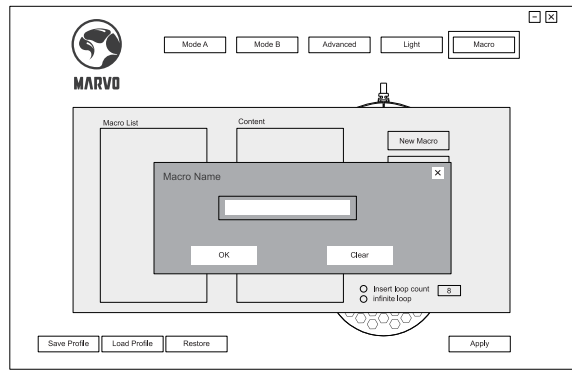
Select "LED" tab and set LED status/LED brightness/LED mode/Breathing speed functions as following graph.  
Click "Apply" to save the setting.



QUICK  
INSTALLATION  
GUIDE

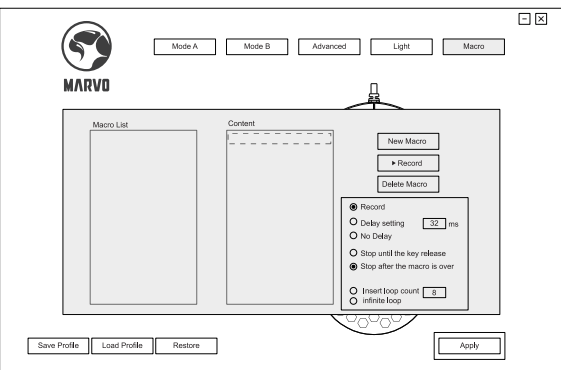
#### Macro Setting

Macro management can record any keys of keyboard, the time of keys reaction and the number of keys cycles.  
Click "New macro" to create a new file, such as a, b, c  
Select whether to increase the delay and the times of cycles.



Click "start recording" and start recording any keys of keyboard. The keys you recorded will display in the macro edit box.  
After the recording, click "start recording".  
To revise the recording content, please make the following changes in the macro options:  
Choose to insert the event: insert relevant content in the selected location

QUICK  
INSTALLATION  
GUIDE



After recording is completed, just exit the macro recording interface, no need to click the confirmation keys.  
Execute a macro, such as the mouse button "4" key set to "macro functions", after recording is complete, press the mouse "4" key to play the recorded content.

QUICK  
INSTALLATION  
GUIDE

### TROUBLESHOOTING

In case of incorrect operation follow the steps below:

- Check the integrity of the connectors;
  - Check the connection to the computer;
  - Check your computer settings;
  - Disconnect and reconnect the equipment; restart the computer.
- If the problem persists, please contact your local seller.

### GENERAL INFORMATION

- Unauthorized repairs or disassembly of the product will void the warranty and may cause its damage.
  - This product is safe and complies to EU requirements.
  - This product is manufactured conforming with the European RoHS standard. This standard was introduced to reduce the amount of electrical and electronic waste emitted into the atmosphere.
  - Using the WEEE symbol (the crossed-out bin) indicates that the electrical and electronic equipment inside the package can be recycled.
- When recycling waste properly, you protect the environment and people health. Segregated household waste collection, aids recycle materials and components used for the production of this device. For detailed information about recycling, please contact your retailer or a local authority.

### Warranty Card

Product Model: \_\_\_\_\_

Product Serial No: \_\_\_\_\_

Date of Purchase: \_\_\_\_\_

Customer Name: \_\_\_\_\_

TEL: \_\_\_\_\_

Address: \_\_\_\_\_

Distributor Name: \_\_\_\_\_

TEL: \_\_\_\_\_

Warranty Card is the important certificate for after-sale service of Marvo products, Please keep it appropriately.

[www.marvo-tech.com](http://www.marvo-tech.com)

## BORN FOR GAMING



FACEBOOK  
Scan Me



Weibo  
Scan Me